

Ski dates
February 23 -
March 2

Saalbach Hinterglemm

with Extension to Salzburg Austria

Extension dates
March 2 -
March 5

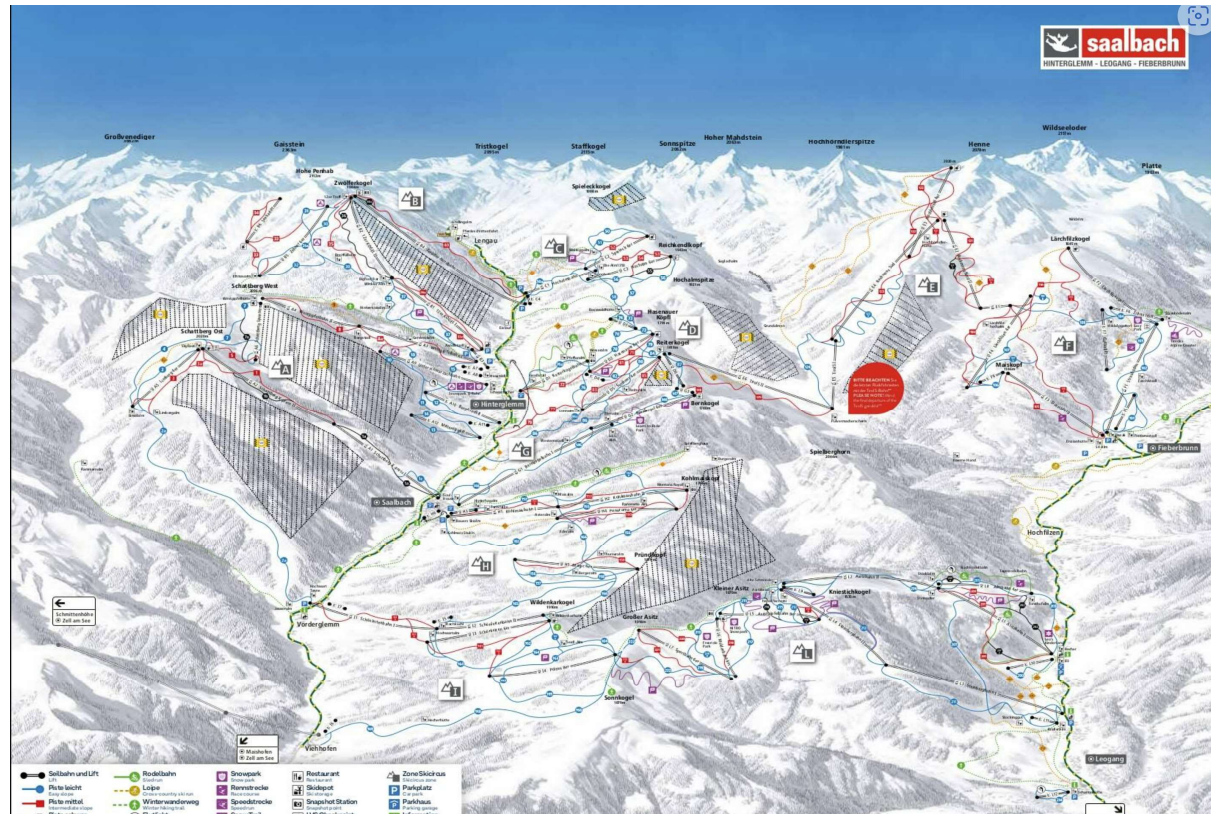
Key Details

Ski

- Hotel Edelweiss, standard rooms available or Jr suite available for added cost
- Hotel has easy access to lifts
- Price includes transportation and meal staff gratuities, does not include room attendant tips
- Price includes breakfast and dinner in Saalbach
- Sign up deadline - October 1
- Air from Grand Rapids to Munich w/ bus to resort \$1,055 air allowance.

Extension

- Hotel located in the heart of Salzburg
- Price includes breakfast
- Sound of Music Tours available
- Old town walking tours
- Mozart Concerts



Piste map

About Saalbach Hinterglemm

Trip Leads: Christina Morales

Max Elevation - 4,640 ft

Resort Elevation 3,820 ft

Almost endless pistes, snow-covered slopes and a fascinating landscape. The Skicircus Saalbach Hinterglemm Leogang Fieberbrunn offers skiing fun at the highest level. With 270 kilometres of [ski slopes](#), it is one of the largest ski areas in Austria. Beginners, families and experts can use 140 km blue, 112 km red and 18 km of black slopes. With 70 cableways and lifts, more than 60 cozy [ski huts](#), numerous [snow parks](#), a [freeride park](#), [floodlight slopes](#) and [toboggan runs](#), Salzburg's skiing region is one of the most diverse and best ski areas in the Alps.

Some lifts start as early as 8 am

Wide range of lift ticket options, prices range from daily rates of € 55 per day to € 325 for 5 of 7 days,

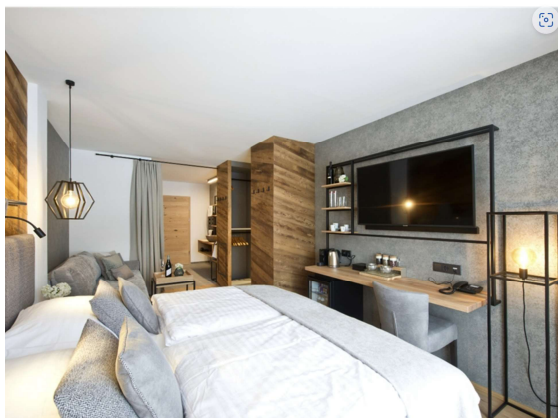
Ski rentals nearby with hotel discounts available

Saalbach is very close to Kitzbuehl and offers the possibility of a day trip to the area.

Average annual snow fall 33 days 474 cm

Large selection of Après ski locations from traditional huts to chill music lounges.

If you opt for purchasing your own air or have a departure city that is not with the main group departing from GRR, you are responsible for being at the Munich airport to meet the bus at scheduled departure time. If you miss the bus for any reason, you are 100% responsible for transport cost from the airport to the resort with no refunds for lost transportation.



Standard Room - Hotel Edelweiss

Cost

Ski Only- \$3,505

Full Trip - \$3,910

Air Allowance \$1,055

Trip Insurance Price on flyer

Highly recommended, purchase through Witte Travel or on your own to mitigate cancellation fees for unforeseen situations.

Cancellation Fees

\$375 0-90 days before departure

\$725 89-46 days before departure

100% if cancelled within 45 days of departure